

Anglorand's Morning Note - 29 May 17

The Day Ahead

Upcoming Results (Confirmed)		Period End	Period Type	Status
29 May 17	TON - Tongaat	31 Mar 17	Y	Confirmed
29 May 17	FGL - Finbond Group	28 Feb 17	Y	Confirmed
29 May 17	FBR - Famous Brands	28 Feb 17	Y	Confirmed
30 May 17	RLO - Reunert	31 Mar 17	S1	Confirmed
30 May 17	NPK - Nampak	31 Mar 17	S1	Confirmed
30 May 17	MRP - Mr Price Group	02 Apr 17	Y	Confirmed
31 May 17	SPP - Spar Group	31 Mar 17	S1	Confirmed

Economic Calendar		Name	Period	Estimate*	Previous
30 May 17 08:00	SA	Money Supply M3 y/y	Apr	5.7	5.6
30 May 17 08:00	SA	Private Sector Credit y/y	Apr	5.3	5.0
30 May 17 14:00	SA	Revenue & Expenditure	Apr	-	3.1
30 May 17 14:30	US	Personal Income	Apr	0.4	0.2
30 May 17 14:30	US	Personal Spending	Apr	0.4	-
30 May 17 15:00	US	S&P CoreLogic US HPI y/y	Mar	-	5.8
30 May 17 16:00	US	Consumer Confidence Index	May	119.8	120.3
30 May 17 16:30	US	Dallas Fed Manufacturing Index	May	15.0	16.8

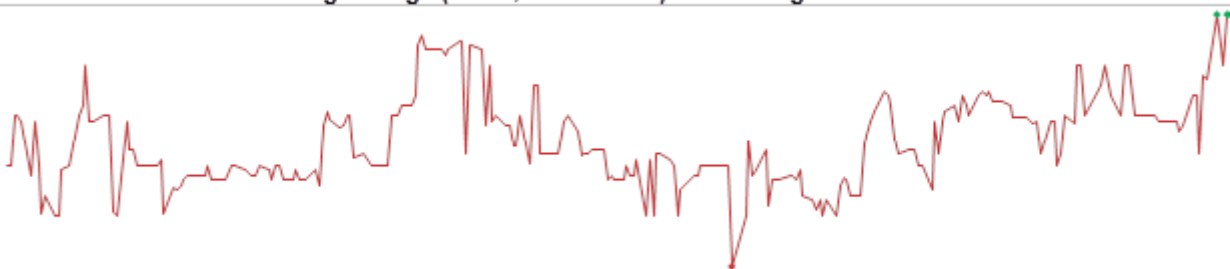
*Bloomberg's consensus estimate

JSE Wrap

The JSE's All Share index lost 0.06% on Friday on value traded of R16.8bn.

- Gainers outnumbered losers in the All Share by 78 to 74
- Foreigners sold net R0.04bn worth of JSE shares and sold net R1.33bn of SA bonds
- 52w highs: DCP 2800c
- 52w lows: TSH 2390c, CIL 1472c, SUI 6200c, RBP 2810c
- Overbought: VOD, DCP, NPN, CML, MSP, APN, DST, STXIND, GRF, NPK
- Oversold: DRD, MRF, PFG, RBP, FBR, SUI, HUG, AFE, IMP, DTC

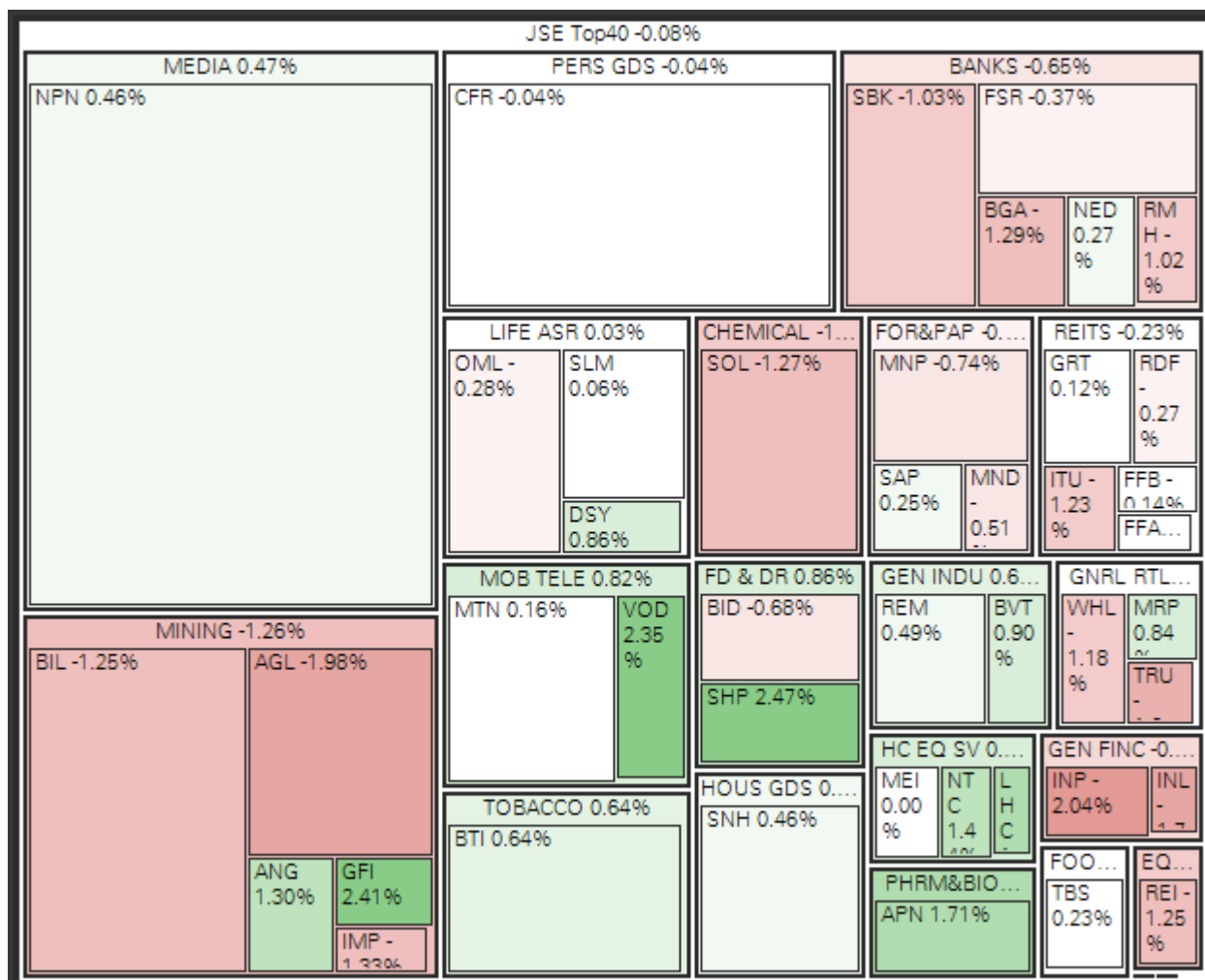
Featured Chart: Micromega Hldgs (MMG, 1150 cents) - 52w range



52w low: 900 cents | 52w high: 1150 cents

A possible disposal has sent MicroMega's shares higher.

Indices	Last Close	1D Δ	1D %Δ	Rel Val*	1M %Δ	YTD %Δ	1Yr %Δ
All Share	53 996.14	-32.25	-0.06%	0.8 x	0.33%	6.60%	-0.20%
Top40	47 535.43	-36.73	-0.08%	0.8 x	0.99%	8.28%	-1.11%



Resources	31 037.03	-331.61	-1.06%	0.8 x	-4.05%	-3.34%	-2.03%
Gold Miners	1 387.39	9.40	0.68%	0.9 x	1.95%	1.84%	-29.21%
Platinum Miners	18.46	-0.34	-1.81%	1.4 x	-13.90%	-6.34%	-24.68%
Industrials	74 360.58	340.52	0.46%	1.0 x	2.72%	15.68%	0.88%
Financials	7 574.01	-49.26	-0.65%	0.6 x	2.53%	-2.33%	18.23%
Banks	15 123.80	-82.17	-0.54%	0.6 x	0.51%	0.30%	-1.83%
SAVI Volatility	14.17	0.02	0.14%		-1.67%	-31.38%	-32.46%

Company News (Volume movers)

TON - Tongaat Hulett -2.36% to 11550 on rel vol. of 2.2x	Has released FY17 results this morning, with HEPS ↑45.0% to 852.7 cents, annual dividend ↑ 30.4% to 300cps.
FBR - Famous Brands Ltd 2.03% to 12550 on rel vol. of 1.8x	Today's FY17 results show HEPS fell 21% due to Nigerian impairments. Excluding that, HEPS were ↑ 13.3%.
MMG - Micromega Holdings Ltd 4.55% to 1150 on rel vol. of 12.1x	Gained on exceptional volume after revealing it "has been approached to explore a material disposal transaction".

Director Dealings			Name	No Shares	Price	% Shares	Value (Rm)
22 May	Sell	DSY	Maphai, Thabane Vincent	301 000	ZAR 128.38	0.05%	38.64
23 May	Buy	AEL	Associate	1 610 693	ZAR 10.91	0.41%	17.57
24 May	Sell	AFT	van Heerden, A J	300 000	ZAR 29.50	0.21%	8.85
25 May	Buy	MTN	Mupita, Ralph	41 670	ZAR 119.82	0.00%	4.99
25 May	Buy	IPF	Hackner, Sam	215 220	ZAR 15.90	0.03%	3.42
26 May	Buy	IPF	Hackner, Sam	190 370	ZAR 15.90	0.03%	3.03
23 May	Buy	IPF	Associate	170 000	ZAR 15.90	0.02%	2.70
23 May	Buy	CND	Associate	898 323	ZAR 2.50	0.15%	2.25
22 May	Buy	CND	Associate	857 489	ZAR 2.49	0.15%	2.14
24 May	Sell	RBX	Raubenheimer, JE (Koos)	80 836	ZAR 24.30	0.04%	1.96

*Only includes the most significant cash transactions from the last week

Dividends	Name	LDT	Ex Date	Pay Date	Amount
DCP	Dis-Chem	30 May 17	31 May 17	05 Jun 17	ZARc 7.35
EQU	Equites Property	30 May 17	31 May 17	05 Jun 17	ZARc 55.93
ILU	Indluplace	30 May 17	31 May 17	05 Jun 17	ZARc 24.71
RBX	Raubex	30 May 17	31 May 17	05 Jun 17	ZARc 45.00
RDF	Redefine Property	30 May 17	31 May 17	05 Jun 17	ZARc 44.82

International

US	Last Close	1D Δ	1D %Δ	Rel Val*	1M %Δ	YTD %Δ	1Yr %Δ
S&P500	2 415.82	0.75	0.03%	0.8 x	1.33%	7.91%	15.09%

Sectors up 6, sectors down 4, biggest moves:

Cons Staples 0.33%

Cons Discretionary 0.31%

Materials 0.29%

Dow Jones	21 080.28	-2.67	-0.01%	0.7 x	0.67%	6.67%	17.94%
Nasdaq	6 210.19	4.94	0.08%	0.9 x	2.69%	15.36%	25.88%

ASIA & EU	Last Close	1D Δ	1D %Δ	Rel Val*	1M %Δ	YTD %Δ	1Yr %Δ
ASX	4 130.15	15.47	0.38%	1.1 x	4.23%	6.63%	19.77%
Nikkei 225*	19 698.02	11.18	0.06%	0.8 x	2.61%	3.05%	17.01%
Hang Seng*	25 676.62	37.35	0.15%	0.9 x	4.31%	16.71%	24.78%
Shanghai	3 110.06	2.23	0.07%	0.8 x	-1.41%	0.21%	10.24%
Dax	12 602.18	-19.54	-0.15%	0.8 x	1.32%	9.76%	22.51%
Cac 40	5 336.64	-0.52	-0.01%	0.9 x	1.32%	9.76%	18.20%
FTSE 100	7 547.63	29.92	0.40%	0.9 x	4.77%	5.67%	20.36%

*Indicates market currently open

Currencies	Last Close	1D Δ	1D %Δ	1M %Δ	YTD %Δ	1Yr %Δ
USDZAR	12.8627	-0.02	0.15%	4.27%	6.82%	22.94%
GBPZAR	16.5	0.02	-0.11%	4.74%	2.69%	40.36%
EURZAR	14.3629	-0.03	0.18%	1.80%	0.62%	22.64%
EURUSD	1.1166	0.00	-0.15%	2.45%	6.17%	0.25%
USDJPY	111.29	-0.04	0.04%	0.49%	5.09%	-0.15%

Commodities	Last Close	1D Δ	1D %Δ	1M %Δ	YTD %Δ	1Yr %Δ
Gold (USD)	1 266.10	-0.80	-0.06%	-0.17%	9.88%	4.38%
Platinum (USD)	958.40	-1.70	-0.18%	1.36%	6.08%	-1.90%
Palladium (USD)	794.53	2.42	0.31%	-2.72%	16.68%	46.57%
Silver (USD)	17.34	-0.01	-0.07%	2.86%	8.86%	8.42%
WTI Crude	49.63	-0.17	-0.34%	0.02%	-12.56%	-4.08%
Iron Ore (USD)	57.91	-2.33	-3.87%	-13.07%	-26.58%	17.04%
LME Copper (USD)	5 638.00	-68.00	-1.19%	-0.90%	2.08%	20.42%

David Smyth, CFA

Mobile +27 83 545 3986 / Direct +27 11 061 4213

Email daves@anglorand.com

Switchboard +27 11 061 4200 / Fax +27 86 668 4924

3rd Floor, 54 Melrose Boulevard, Melrose Arch,

Melrose North, 2196

www.anglorand.com



A Multi-National Financial Services Provider subsidiary of Ningbo Construction, China Listed Company, Stock Code 601789

