

## Anglorand's Morning Note - 16 May 17

### The Day Ahead

#### Upcoming Results (Confirmed)

		Period End	Period Type	Status
16 May 17	THA - Tharisa	31 Mar 17	S1	Confirmed
16 May 17	MZR - Mazor Group	28 Feb 17	Y	Confirmed
17 May 17	DIB - Dipula	30 Apr 17	Q2	Confirmed
17 May 17	DIA - Dipula	30 Apr 17	Q2	Confirmed
18 May 17	SSK - Stefanutti Stocks	28 Feb 17	Y	Confirmed
18 May 17	INP - Investec	31 Mar 17	Y	Confirmed
18 May 17	INL - Investec	31 Mar 17	Y	Confirmed

#### Economic Calendar

	Name	Period	Estimate*	Previous
16 May 17 14:30	US Housing Starts	Apr	1 260.0	1 215.0
16 May 17 14:30	US Building Permits	Apr	1 270.0	1 260.0
16 May 17 15:15	US Industrial Production m/m	Apr	0.4	0.5
16 May 17 15:15	US Capacity Utilization	Apr	76.3	76.1

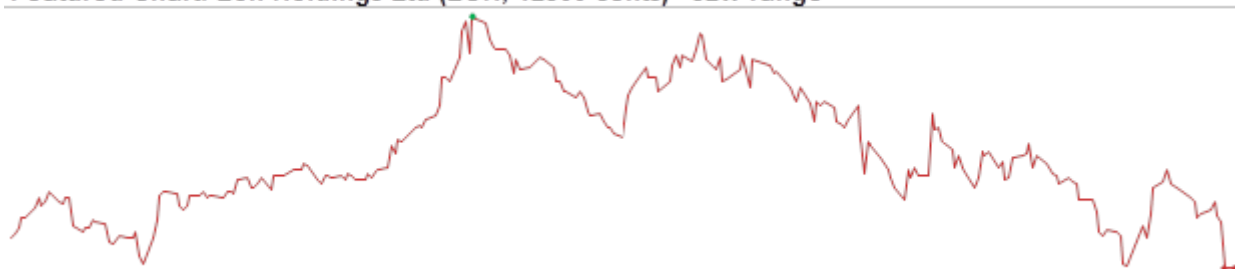
\*Bloomberg's consensus estimate

### JSE Wrap

The JSE's All Share index lost 0.02% on Monday on value traded of R13.5bn.

- Losers outnumbered gainers in the All Share by 93 to 56
- Foreigners sold net R0.06bn worth of JSE shares and bought net R1.97bn of SA bonds
- 52w highs: NPN 275000c, OCT 2554c, SAP 10522c, CLS 13818c
- 52w lows: CIL 1600c, SUI 6862c
- Overbought: SRE, CMH, STXIND, MEI, STXSWX, CTK, EQU, NEP, MSP, CLS
- Oversold: RLF, ADR, LEW, MRF, AFE, PGL, TWR, MTA, JBL, DRD

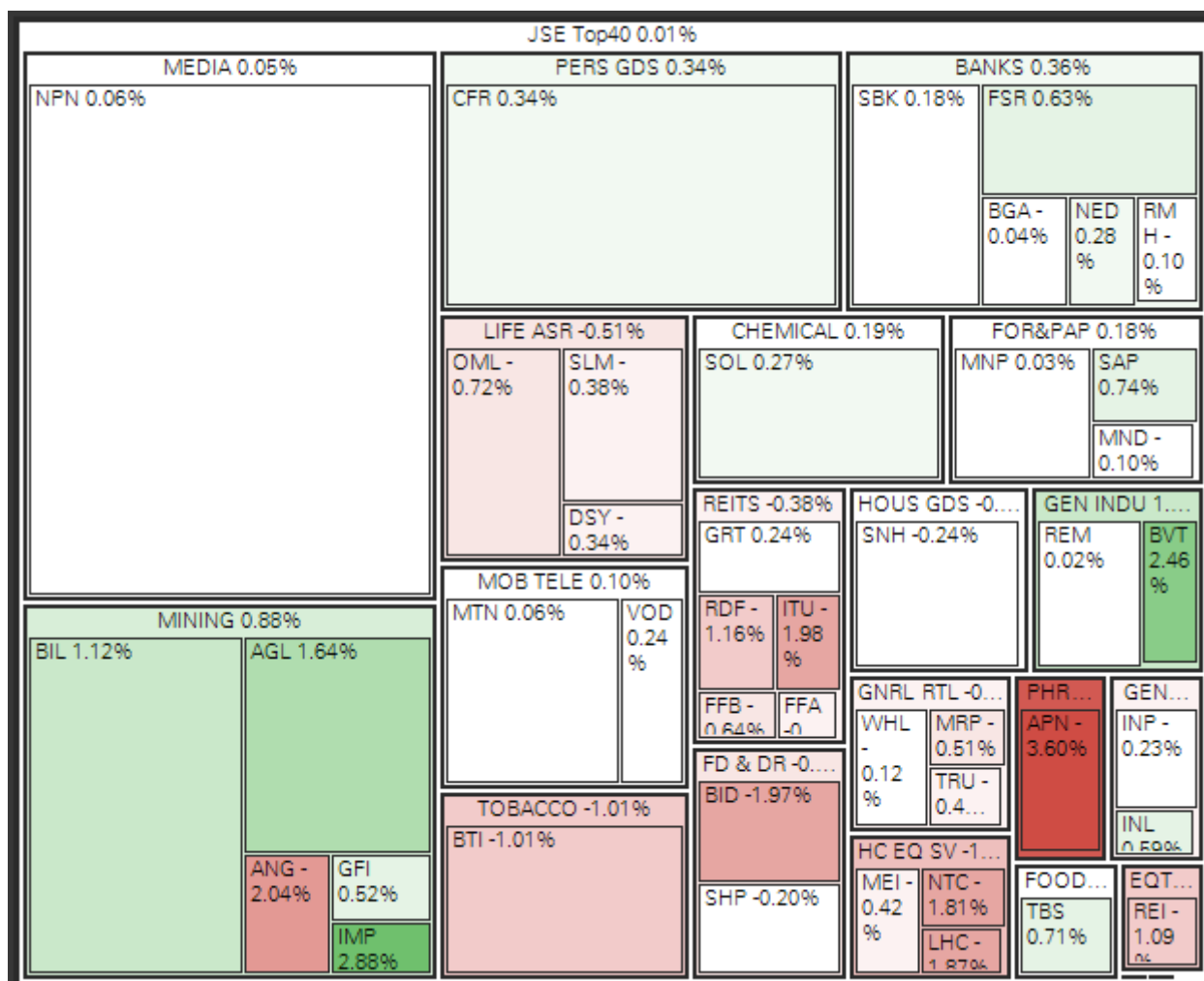
#### Featured Chart: Eoh Holdings Ltd (EOH, 12500 cents) - 52w range



52w low: 12500 cents | 52w high: 17483 cents

EOH founder Asher Bohbot will step down at the end of June.

Indices	Last Close	1D Δ	1D %Δ	Rel Val*	1M %Δ	YTD %Δ	1Yr %Δ
All Share	54 052.18	-11.16	-0.02%	0.7 x	1.01%	6.71%	3.13%
Top40	47 436.82	6.39	0.01%	0.7 x	1.70%	8.05%	2.55%



Resources	32 144.35	237.00	0.74%	0.5 x	-4.55%	0.11%	1.69%
Gold Miners	1 410.55	-15.14	-1.06%	0.4 x	-15.22%	3.54%	-36.34%
Platinum Miners	21.02	0.31	1.50%	0.4 x	-11.49%	6.65%	-20.59%
Industrials	73 437.14	-130.21	-0.18%	0.8 x	3.71%	14.24%	3.48%
Financials	7 380.15	26.25	0.36%	0.6 x	1.68%	-4.83%	22.78%
Banks	15 032.73	-25.40	-0.17%	0.6 x	2.02%	-0.30%	3.72%
SAVI Volatility	13.88	0.00	0.00%		-8.14%	-32.78%	-38.37%

### Company News (Volume movers)

<b>EOH - Eoh Holdings Ltd</b> -6.86% to 12500 on rel vol. of 3.7x	Shares fell after it announced that founder and CEO Asher Bohbot will step down at the end of June.
<b>BAW - Barloworld Ltd</b> 5.09% to 11999 on rel vol. of 0.7x	HEPS growth of 9% to 365c during 1H17 sent its share sharply higher. The interim dividend of 125c is 9% higher y/y.
<b>BWN - Balwin Props</b> 2.92% to 705 on rel vol. of 3.6x	Shares gained after its FY17 release, with revenue up 30% and HEPS 7% higher. Revenue recognition was brought forward.
<b>APN - Aspen</b> -3.60% to 27531 on rel vol. of 1.0x	Issued a SENS stating that the European Commission has begun an investigation into Aspen's European subsidiaries.

Director Dealings			Name	No Shares	Price	% Shares	Value (Rm)
09 May	Sell	WBO	Associate	45 085	ZAR 144.02	0.07%	6.49
10 May	Sell	ASC	Associate	210 000	ZAR 25.35	0.05%	5.32
10 May	Sell	WBO	Associate	28 348	ZAR 144.23	0.05%	4.09
12 May	Buy	AEL	Associate	396 445	ZAR 10.10	0.10%	4.00
11 May	Sell	ASC	Associate	150 000	ZAR 24.64	0.03%	3.70
11 May	Sell	SOL	Director of a Subsidiary	7 500	ZAR 407.44	0.00%	3.06
11 May	Sell	AVV	Director of a Subsidiary	120 000	ZAR 19.20	0.07%	2.30
09 May	Buy	HDC	Dunford, Graham R	4 451	ZAR 138.00	0.01%	0.61
09 May	Sell	HLM	Mkhize, Moses Z	89 397	ZAR 6.73	0.03%	0.60
09 May	Buy	HDC	Amoils, Clifford V	3 717	ZAR 138.00	0.01%	0.51

\*Only includes the most significant cash transactions from the last week

Dividends	Name	LDT	Ex Date	Pay Date	Amount
EFG	Efficient Group	16 May 17	17 May 17	22 May 17	ZARc 1.63
IDQ	Inequity Group Ltd	16 May 17	17 May 17	22 May 17	ZARc 10.50
MDI	Master Drilling Group L	16 May 17	17 May 17	22 May 17	ZARc 30.00
REA	Rebosis A	16 May 17	17 May 17	22 May 17	ZARc 120.41
REB	Rebosis	16 May 17	17 May 17	22 May 17	ZARc 60.80
TRE	Trencor Ltd	16 May 17	17 May 17	22 May 17	ZARc 50.00

## International

US	Last Close	1D Δ	1D %Δ	Rel Val*	1M %Δ	YTD %Δ	1Yr %Δ
S&P500	2 402.32	11.42	0.48%	1.0 x	3.15%	7.30%	16.24%

Sectors up 8, sectors down 2, biggest moves:

Materials	0.84%
Financials	0.77%
Energy	0.62%

Dow Jones	20 981.94	85.33	0.41%	1.0 x	2.58%	6.17%	18.47%
Nasdaq	6 149.67	28.44	0.46%	1.1 x	5.93%	14.24%	28.78%

ASIA & EU	Last Close	1D Δ	1D %Δ	Rel Val*	1M %Δ	YTD %Δ	1Yr %Δ
ASX	4 079.22	8.07	0.20%	1.0 x	1.67%	5.32%	20.76%
Nikkei 225*	19 909.17	39.32	0.20%	1.1 x	8.58%	4.16%	20.91%
Hang Seng*	25 296.32	-75.27	-0.30%	1.4 x	4.26%	14.98%	27.22%
Shanghai*	3 084.01	-6.22	-0.20%	0.8 x	-4.99%	-0.63%	8.18%
Dax	12 807.04	36.63	0.29%	0.9 x	5.76%	11.55%	28.68%
Cac 40	5 417.40	11.98	0.22%	1.0 x	6.83%	11.42%	25.63%
FTSE 100	7 454.37	18.98	0.26%	1.0 x	1.73%	4.36%	21.18%

\*Indicates market currently open

Currencies	Last Close	1D Δ	1D %Δ	1M %Δ	YTD %Δ	1Yr %Δ
USDZAR	13.1671	-0.02	0.14%	0.99%	4.35%	18.87%
GBPZAR	16.9975	-0.01	0.03%	-1.73%	-0.31%	32.62%
EURZAR	14.4742	0.00	-0.03%	-2.22%	-0.16%	22.53%
EURUSD	1.0993	0.00	0.16%	3.29%	4.53%	-2.90%
USDJPY	113.49	-0.30	0.26%	-4.04%	3.06%	-3.93%

Commodities	Last Close	1D Δ	1D %Δ	1M %Δ	YTD %Δ	1Yr %Δ
Gold (USD)	1 233.40	2.72	0.22%	-4.07%	7.04%	-3.20%
Platinum (USD)	933.20	3.86	0.41%	-4.11%	3.29%	-11.23%
Palladium (USD)	798.55	1.78	0.22%	1.06%	17.27%	35.07%
Silver (USD)	16.71	0.08	0.47%	-9.27%	4.91%	-2.52%
WTI Crude	49.02	0.17	0.35%	-8.54%	-13.22%	-2.60%
Iron Ore (USD)	60.80	-0.58	-0.94%	-11.47%	-22.91%	11.48%
LME Copper (USD)	5 593.25	54.50	0.98%	-1.18%	1.27%	20.65%

**David Smyth, CFA**

Mobile +27 83 545 3986 / Direct +27 11 061 4213

Email [daves@anglorand.com](mailto:daves@anglorand.com)

Switchboard +27 11 061 4200 / Fax +27 86 668 4924

3rd Floor, 54 Melrose Boulevard, Melrose Arch,

Melrose North, 2196

[www.anglorand.com](http://www.anglorand.com)



A Multi-National Financial Services Provider, subsidiary of Ningbo Construction, China Listed Company, Stock Code 601789

