

Anglorand's Morning Note - 12 May 17

The Day Ahead

Upcoming Results (Confirmed)

		Period End	Period Type	Status
12 May 17	NEP - NEPI	31 Mar 17	Q1	Confirmed
12 May 17	LHC - Life	31 Mar 17	S1	Confirmed
15 May 17	VOD - Vodacom	31 Mar 17	Y	Confirmed
15 May 17	SAP - Sappi	31 Mar 17	S1	Confirmed
15 May 17	NTC - Netcare	31 Mar 17	S1	Confirmed
15 May 17	GTC - Globe Trade Centre	31 Mar 17	Q1	Confirmed
16 May 17	THA - Tharisa	31 Mar 17	S1	Confirmed

Economic Calendar

	Name	Period	Estimate*	Previous
12 May 17 14:30	US CPI m/m	Apr	0.2	(0.3)
12 May 17 14:30	US Retail Sales - advance m/m	Apr	0.6	(0.2)
12 May 17 16:00	US UoM Consumer Sentiment Index	May P	97.0	97.0

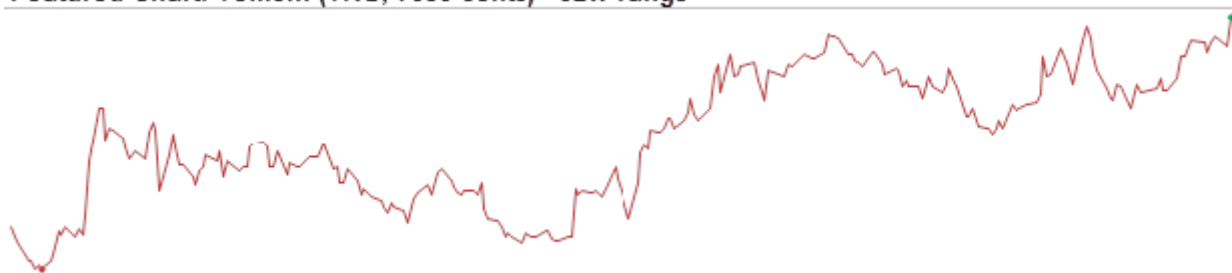
*Bloomberg's consensus estimate

JSE Wrap

The JSE's All Share index lost 0.26% on Thursday on value traded of R18.4bn.

- Losers outnumbered gainers in the All Share by 87 to 70
- Foreigners sold net R0.3bn worth of JSE shares and sold net R1.17bn of SA bonds
- 52w highs: TKG 7838c
- 52w lows: CIL 1635c
- Overbought: STXIND, CMH, MEI, CTK, BAT, ROC, NEP, BID, ANH, ARA
- Oversold: ADR, LEW, ENX, RLF, GND, TWR, AEG, OCE, TON, AFE

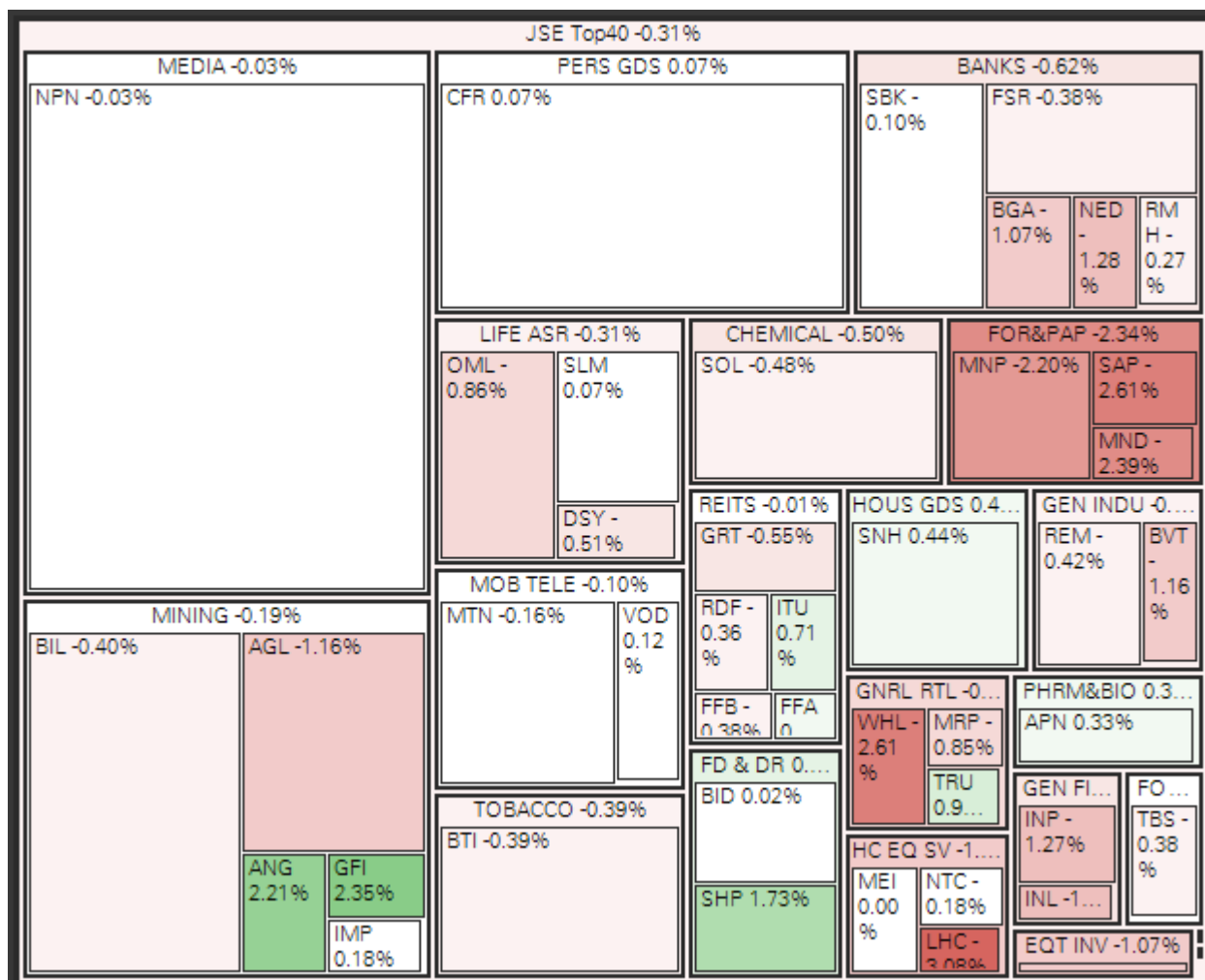
Featured Chart: Telkom (TKG, 7838 cents) - 52w range



52w low: 5500 cents | 52w high: 7838 cents

Telkom shares rose to a new 52w high yesterday.

Indices	Last Close	1D Δ	1D %Δ	Rel Val*	1M %Δ	YTD %Δ	1Yr %Δ
All Share	54 114.00	-140.35	-0.26%	0.9 x	1.05%	6.83%	5.16%
Top40	47 488.45	-147.13	-0.31%	1.0 x	1.59%	8.17%	5.09%



Resources	31 963.75	-209.13	-0.65%	0.8 x	-5.53%	-0.45%	6.42%
Gold Miners	1 396.35	29.91	2.19%	0.7 x	-13.27%	2.50%	-34.82%
Platinum Miners	21.19	0.12	0.57%	0.5 x	-8.62%	7.51%	-15.71%
Industrials	73 751.21	-54.57	-0.07%	1.0 x	3.85%	14.73%	5.98%
Financials	7 332.21	-45.95	-0.62%	0.7 x	2.34%	-5.45%	21.34%
Banks	15 007.34	-85.43	-0.57%	0.8 x	2.53%	-0.47%	3.61%
SAVI Volatility	13.88	-0.40	-2.80%		-10.57%	-32.78%	-36.82%

Company News (Volume movers)

DTC - Datatec Ltd -7.24% to 5650 on rel vol. of 3.1x	Further trading statement for February year end guided shareholders to expect HEPS to drop by 90% to 2 US cents.
AEL - Allied Electronics Cor- 0.90% to 1010 on rel vol. of 8.1x	The company returned to profitability in FY17, reporting HEPS of 71cps (114cps from continuing operations).
MND - Mondi Ltd -2.39% to 34478 on rel vol. of 2.8x	Reported in its 1H17 trading update that underlying operating profit for Q1 fell 6% y/y due to higher costs, lower sales prices.
TKG - Telkom 3.42% to 7838 on rel vol. of 0.9x	Shares advanced to a new 52w high after it said FY17 HEPS, excluding once-off restructuring, are expected to rise 0% - 20%.

Director Dealings			Name	No Shares	Price	% Shares	Value (Rm)
08 May	Sell	SUR	Ambor, Allen Jacob	3 099 176	ZAR 32.50	2.86%	100.72
05 May	Sell	EFG	Associate	1 746 209	ZAR 7.50	1.93%	13.10
05 May	Buy	EFG	Booyesen, Stefanus F	1 746 209	ZAR 7.50	1.93%	13.10
08 May	Sell	SUR	Madders, Keith	332 650	ZAR 33.00	0.31%	10.98
08 May	Sell	SHP	Director of a Subsidiary	39 761	ZAR 201.65	0.01%	8.02
09 May	Sell	WBO	Associate	45 085	ZAR 144.02	0.07%	6.49
10 May	Sell	WBO	Associate	28 348	ZAR 144.23	0.05%	4.09
08 May	Sell	ACT	Director of a Subsidiary	250 000	ZAR 6.10	0.05%	1.53
08 May	Sell	ACT	Associate	250 000	ZAR 6.10	0.05%	1.53
09 May	Buy	HDC	Dunford, Graham R	4 451	ZAR 138.00	0.01%	0.61

*Only includes the most significant cash transactions from the last week

Dividends	Name	LDT	Ex Date	Pay Date	Amount
EFG	Efficient Group	16 May 17	17 May 17	22 May 17	ZARc 1.63
IDQ	Indequity Group Ltd	16 May 17	17 May 17	22 May 17	ZARc 10.50
MDI	Master Drilling Group L	16 May 17	17 May 17	22 May 17	ZARc 30.00
REA	Rebosis A	16 May 17	17 May 17	22 May 17	ZARc 120.41
REB	Rebosis	16 May 17	17 May 17	22 May 17	ZARc 60.80
TRE	Trencor Ltd	16 May 17	17 May 17	22 May 17	ZARc 50.00

International

US	Last Close	1D Δ	1D %Δ	Rel Val*	1M %Δ	YTD %Δ	1Yr %Δ
S&P500	2 394.44	-5.19	-0.22%	0.9 x	2.11%	6.95%	16.00%

Sectors up 3, sectors down 7, biggest moves:

Cons Discretionary	-0.60%
Financials	-0.53%
Telecoms	-0.48%

Dow Jones	20 919.42	-23.69	-0.11%	0.9 x	1.59%	5.85%	18.05%
Nasdaq	6 115.96	-13.18	-0.22%	1.0 x	4.79%	13.61%	29.10%

ASIA & EU	Last Close	1D Δ	1D %Δ	Rel Val*	1M %Δ	YTD %Δ	1Yr %Δ
ASX	4 050.64	-2.44	-0.06%	1.2 x	0.81%	4.58%	20.72%
Nikkei 225*	19 856.33	-105.22	-0.53%	1.1 x	7.03%	3.88%	19.28%
Hang Seng*	25 147.44	21.89	0.09%	1.2 x	3.43%	14.30%	26.27%
Shanghai*	3 075.49	13.99	0.46%	0.9 x	-6.06%	-0.91%	8.45%
Dax	12 711.06	-46.40	-0.36%	1.1 x	4.58%	10.71%	28.89%
Cac 40	5 383.42	-17.04	-0.32%	1.3 x	5.53%	10.72%	25.39%
FTSE 100	7 386.63	1.39	0.02%	1.2 x	0.51%	3.41%	21.01%

*Indicates market currently open

Currencies	Last Close	1D Δ	1D %Δ	1M %Δ	YTD %Δ	1Yr %Δ
USDZAR	13.3657	0.00	0.02%	0.71%	2.80%	12.22%
GBPZAR	17.2239	-0.01	0.03%	-2.01%	-1.63%	26.09%
EURZAR	14.5307	0.01	-0.08%	-1.22%	-0.55%	17.56%
EURUSD	1.087	0.00	0.08%	1.92%	3.36%	-4.46%
USDJPY	113.71	-0.15	0.13%	-4.12%	2.86%	-4.12%

Commodities	Last Close	1D Δ	1D %Δ	1M %Δ	YTD %Δ	1Yr %Δ
Gold (USD)	1 226.74	1.69	0.14%	-4.68%	6.46%	-2.93%
Platinum (USD)	924.55	6.55	0.71%	-4.99%	2.33%	-11.75%
Palladium (USD)	807.72	4.60	0.57%	0.76%	18.61%	35.79%
Silver (USD)	16.42	0.08	0.50%	-11.21%	3.09%	-3.28%
WTI Crude	47.88	0.05	0.10%	-10.54%	-15.24%	-4.14%
Iron Ore (USD)	60.38	-0.37	-0.61%	-18.82%	-23.44%	8.66%
LME Copper (USD)	5 521.25	46.00	0.84%	-3.81%	-0.03%	17.03%

David Smyth, CFA

Mobile +27 83 545 3986 / Direct +27 11 061 4213
 Email daves@anglorand.com

Switchboard +27 11 061 4200 / Fax +27 86 668 4924
 3rd Floor, 54 Melrose Boulevard, Melrose Arch,
 Melrose North, 2196
www.anglorand.com

